

*Making a Difference in the  
Lives of Children Since 1896.*



*Annual Report*  
2008 - 2009

**The King's Daughters  
Board of Directors  
2008-2009**

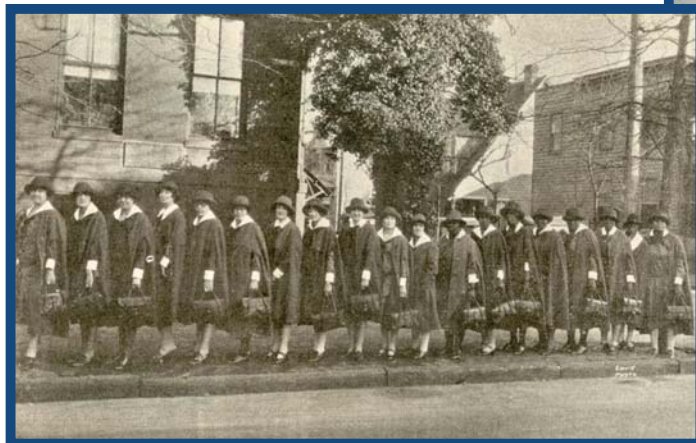
Katie Van Buren, President  
Maryellen Baldwin, Vice President of Development  
Robyn Maus, Vice President of Circles/Membership  
Christine Neikirk, Vice President of Public Relations  
Kathryn Callahan, Treasurer  
Elizabeth Hope, Secretary/Junior Circles Major Projects



Buffy Barefoot, Membership Co-Chair  
Cathy Britt, Legislative / Education Co-Chair  
Betsy Cooper, Major Project Chair - Holly Ball/RunWalk  
Diana Blanchard Gross, Asst. Public Relations  
Patricia Hodge, Legislative / Education Co-Chair  
Patti Host, Asst. Junior Circles  
Beth Johnson, Endowment Funds/Governance  
Brie Martinson, Major Project Chair, Tour de Cuisine & Holly Festival of Trees  
Kristen Nunnally, Junior Circles Chair  
Kellie Tucker, Membership Co-Chair  
Joyce Weddle, Asst. Membership

## Since 1896...

The King's Daughters are the founders of Children's Hospital of The King's Daughters. We have more than 120 years of fascinating history of caring for children beginning with hiring a bicycle nurse, to opening a clinic, to building a modern stand-alone pediatric hospital. We have been making a difference in the lives of children in Hampton Roads since 1896.



The King's Daughters membership is organized into circles (Adult and Junior) that are located throughout Hampton Roads. Each Circle elects its own leaders, organizes its own events, contributes hand-sewn items and donates time and money to CHKD. Members also chair and serve on The King's Daughters' major fundraising projects throughout the year. A Board of Directors which governs the organization is elected annually by the membership and is supported by a dedicated staff.

Children's Hospital of The King's Daughters Health System (CHS) is dedicated exclusively to meeting the unique medical and surgical needs of children, both inpatient and outpatient, throughout Virginia and northeastern North Carolina. Facilities include the Children's Hospital of The King's Daughters as well as a comprehensive network of pediatric providers who work in locations throughout our community.







*The King's Daughters do make a difference.*

In today's uncertain economic times, CHKD relies on us more than ever to meet the burgeoning medical needs of the region's children. After 113 years of service to CHKD, The King's Daughters continue to grow in the fulfillment of our mission and vision statement. Our focus remains on the achievement of superior pediatric health care for the children in Hampton Roads. We continue to be proactive in the development, education, and retention of our volunteers. We strive to raise funds through creative and cost effective projects. We advocate for better lives and better health care for the children in our community. We also continue to serve as ambassadors for CHKD and to promote The King's Daughters in our community. The impressive 38,952 hours The King's Daughters volunteered

this year are phenomenal. Whether we are fundraising for the hospital, increasing community awareness, or sewing and stuffing bears, The King's Daughters continue to be a strong force in Hampton Roads.

**Community -**

New relationships were made this year with our former leaders, our partners in Children's Health System and the business community. We continued to engage previous King's Daughters' presidents through the Past Presidents' Council by soliciting their ideas on fundraising and surviving tough economic times. The King's Daughters are active participants on the boards for Children's Health System and Children's Health Foundation as well as the three Children's Hospital Development Boards. The lines of communication between CHS and The King's Daughters have never been stronger. New this year, The King's Daughters engaged businesses in a Corporate Advisory Board for the Holly Ball which proved very successful for this event. This model led to the creation of a Corporate Advisory Board for all of our major projects that will involve key leaders in the community who will provide insight and recommendations for our events. Through these relationships we hope to analyze our fundraising and communication efforts as well as identify new prospects throughout the business community. Staff continue throughout the year to be active members and participate with the Chamber of Commerce, Downtown Norfolk Council, Association of Fundraising Professionals, and Virginia Association of Healthcare Auxiliaries and Volunteers.



**Website / Electronic Media -**

The King's Daughters' website, [www.kingsdaughters.org](http://www.kingsdaughters.org), continues to be a valuable resource for our members and the community. Circles have their own web pages where they can share their projects with the community and sell tickets for their events online. Through our website we also have the means to keep the public informed on upcoming activities, solicit volunteers, provide membership information, promote events, sell tickets and receive donations. The office also sends out weekly emails, called "KD E-Blast", that keep our membership in touch with upcoming events and opportunities to volunteer.

The King's Daughters also created a presence on the social marketing website, [facebook.com](http://facebook.com). We established a fan page, a group page and a cause page. Our cause page was enormously successful and grew to more than 3500 members in its first year. These members actively recruit new members for the page as well as develop their own fundraising efforts. This was a new marketing tool for us and we will be exploring more opportunities with facebook in the next year.

### **Go Green -**

This year The King's Daughters worked towards being more environmentally friendly and adopted a "Go Green!" attitude. The monthly newsletter, The Circular, is now emailed to members who have email addresses, thus saving the printing costs as well as paper and ink. More than 80% of The King's Daughters have email addresses. Those who don't, still receive the circular by mail. Invitations and fliers for events, when possible, were also emailed and promoted electronically. Additionally, steps were taken to replace the printed directory and annual report with electronic versions. The King's Daughters's want to conserve resources, reduce costs, and limit spending wherever possible.



### **The King's Daughters Office –**

The King's Daughters' administrative staff is a highly motivated and organized team. Last year, titles were changed to better reflect their professional responsibilities. Lisa Coleman is the Executive Director, Season Roberts is the Development Operations Manager; Natalie Carducci is the Membership Coordinator; and Amanda Bohannon is the Department Secretary. They continue to enhance our programs, promote our existence, present innovative new ideas for streamlining our efforts and are always eager to help with all projects, no matter how large or small.

### **CHKD Endowment and Capital Campaign Participation**

The King's Daughters continued to support CHKD's \$34.5 million Endowment Campaign, as we steadily grow closer to completing our 2010 goal of \$1 million contribution to the Child Abuse and Nursing Externship Programs. We expect to accomplish this with 100% participation from our Circles.

The King's Daughters also supported the new CHKD Virginia Beach Health and Surgery Center with a pledge of \$250,000 over 5 years beginning in the 2009-10 fiscal year. This year the proceeds from The Holly Ball were donated towards this pledge. The King's Daughters are recognized with a plaque in the second floor atrium of the Center.

### **Membership**

We now have 1051 members in 44 Adult Circles and 7 Junior Circles. This number includes four new Circles that were formed this 2008-09 fiscal year. The King's Daughters' Circles are located in Norfolk, Virginia Beach, Chesapeake, Suffolk, Portsmouth and on the Peninsula. Circle of Service, our first King's Daughters' Circle moved to an honorary Circle status this year. In addition, Wayside Circle, our second oldest Circle, retired this year. These Circles will be recognized at the Annual Recognition meeting in October.

The 2007-08 King's Daughters Annual Recognition Meeting was held on October 7th, at the Norfolk Yacht & Country Club. Awards were presented to Circles and members, followed by a memorial service for departed King's Daughters. We enjoyed celebrating the outstanding accomplishments of all King's Daughters that year. A tribute was given to Thalia Friendship Circle, who became an honorary Circle. They received a standing ovation for their 48 years of service to CHKD. Another highlight of the evening was celebrating and thanking Beth Duke, Senior Vice President of Community Relations and PR for CHKD, for her 43 years of service and her unwavering support of The King's Daughters. She received The King's Daughters' Award of Excellence which is awarded each year to a non-King's Daughter who shows exemplary dedication to our organization.





### **KD Connect Meetings**

Our KD Connect meetings allow communication between circles, staff and CHKD; they were held in September, October, January, April, and June. Guest speakers from CHS addressed the challenges facing CHKD in these difficult economic times and the strategies being undertaken to maintain the viability of the hospital. Circles announced their upcoming projects and events and presented checks to the organization while staff relayed valuable information regarding raffle requirements and major projects.

### **Circle Accomplishments –**

Despite the challenging economy, Circle projects and revenues were at an all time high.

- \$296,000 was donated by circles this year. New Circles and Circles who had not fundraised in a few years were instrumental in raising these funds.
- 18,206 pieces of linens, knitted items, sewn items, and gifts were donated.
- 38,952 volunteer hours were contributed.
- Adult Leaders and Treasurers attended an orientation and training session in September.
- Circle members continued to tour the hospital, inspiring renewed interest, excitement and enthusiasm for CHKD.
- All King's Daughters were sent a special "Thank You" e-card during National Volunteers Week in April for their invaluable service.

### **Junior Circles –**

As always, our Junior Circles excelled this year, and generated over \$11,000 for CHKD. The 2nd Annual Battle of the Bands, "Rock 4 the Kids" was hosted by the juniors at the Church of the Good Shepherd in Norfolk in February and raised over \$6,500. Individual Junior Circles were active with various projects of their own, as well as providing Adult Circles with energetic volunteers. All junior leaders and treasurers attended a training and orientation meeting in September to help them organize for the year.



### **Major Projects –**

The King's Daughters 2008-09 Major Projects consisted of the Tysinger "Fling for the Kids", Holly Festival of Trees, Holly Ball, Tour de Cuisine, and the RunWalk for the Kids:

- The Tysinger "Fling for the Kids" raffle event successfully completed its fifth year at Tysinger Motors on October 3rd, giving a new C300 Mercedes-Benz to one lucky winner and raising approximately \$18,000 for CHKD.



- The 26th Annual Holly Festival of Trees was held at the Norfolk Waterside Marriott Hotel in Downtown Norfolk. The Holly Events kicked off with the first unveiling of four holiday windows in the Marriott, decorated by Macy's and visible to the public from November 1-December 31. A Luncheon and Fashion Show was held, followed by an evening Gala with Live and Silent Auctions. Children and families enjoyed the holiday tradition of Breakfast with Santa. This year, the Holly Festival of Trees raised \$60,000 for CHKD.



- The 46th Annual Holly Ball was held at The Westin, Town Center, Virginia Beach. This event surpassed expectations and was supported by the Hampton Roads' business community. Our Holly Ball Corporate Advisory Board greatly contributed to the success of the evening. This event SOLD OUT and raised \$60,000 for CHKD's Virginia Beach Health and Surgery Center.



- The 5th Annual Tour de Cuisine reached new levels and was held in the Talbot Park neighborhood of Norfolk on May 30th. Five families in our community opened their beautiful homes and five local restaurants donated their culinary creations. Entertainment was provided by young talented musicians from the Governor's School for the Arts. This event continues to be a great success and raised \$25,000.

- The 4th Annual RunWalk for the Kids was held on June 13 on the campus of CHKD with an 8K Run, a 2-mile walk and a 1 Mile Fun Run. Over 2,600 people registered for this year's event which was a 53% increase in participation from 2008. The RunWalk attracted families, schools, churches, and businesses throughout the community. Teams played a pivotal role in participation with more than 74 teams made up of families, friends, businesses and many CHKD employees and patients. CHKD's Rehab Department celebrated its 10th Anniversary by fielding a team at the event. 350 children took part in the 1 Mile "Fun Run" and over 75 volunteers from the community helped make this event fun, educational and a great success for our hospital, while raising a total of \$90,000.



**Canisters** – The King's Daughters, with the generous help of local merchants and our own CHKD Thrift Stores, raised over \$225,000 from canister donations this year. Our Canisters are easily identifiable and are an essential form of income to The King's Daughters.

**Thrift Stores** – The King's Daughters continued to support CHKD Thrift Stores through individual donations. The Circle Donation Bag Drive in May generated a total of 4,901 bags full of donations. Each circle collects bags from its members and totals are calculated by the office. Lakewood Circle was the winner of this year's Bag Drive with 695 bags. Members of The King's Daughters staff and Board of Directors attended the Thrift Store Managers' annual breakfast to show appreciation for their continued promotion of the canisters.

### Other Fundraisers, Special Projects and Happenings –

In addition to Circle activities and Major Projects, The King's Daughters supported the following special projects:

- Caritas Circle, Circle of Friends, North Suffolk Circle, and Lynnhaven Sandpipers' Junior Circle participated in the annual "Let's Make a Scarecrow" Project hosted in conjunction with McDonald Garden Center, October 11 & 12, 2008. This event raised \$9,880.
- The King's Daughters teamed with the Iguana Surf Club for their annual Surf Competition. Friends and families got together for a fun day on the beach and were later awarded prizes for accomplishments such as "the Best Wipeout!" This event raised \$3,500.





### Advocacy Efforts –

The strong grassroots advocacy program continued with the assistance of Circle Legislative Liaisons and King’s Daughters Board members. In a year where every dollar was examined in Richmond, The King’s Daughters remained a powerful force in advocating for children’s health and funding for CHKD. A delegation of King’s Daughters traveled to the State Capitol in January to meet with legislators to address the issue of funding children’s healthcare. Our voice was influential in making sure that CHKD was exempted from Medicaid cuts that could have greatly affected CHKD’s bottom line as nearly 55% of the patients receive Medicaid.

### Annual Contribution to CHKD

The 2008-09 Fiscal Year saw the world slide into an economic recession. As the crisis deepened in the fall of 2008, The King’s Daughters developed tight cost controls and increased fundraising opportunities. In spite of the economic environment, and because of these efforts, The King’s Daughters were able to donate \$300,000 to CHKD for fiscal year 2008-09. These funds were raised through Circle Projects, Major Projects, Canister Funds and other sources.

The King’s Daughters made a significant operating change in Fiscal Year 2008-09. We can proudly say that we are self-sustaining, that we no longer receive Corporate Support/funding from CHKD. Historically, CHKD provided funds to The King’s Daughters at the beginning of each fiscal year to cover operating costs. These monies would be paid back to CHKD at the end of the fiscal year as part of our annual contribution to CHKD. For the first time, our Annual Donation to CHKD is a true reflection of our fundraising efforts!



### In closing...

It has been my pleasure to serve on The King’s Daughters’ Board of Directors for the past nine years. This privilege has been an educational and rewarding experience for me. I have had the opportunity to get to know so many of our King’s Daughters and have worked with incredible and committed board members, past presidents, office staff and CHKD employees. I have especially enjoyed being involved in our community as your King’s Daughters representative.

I want to give a special thank you to all King’s Daughters for their endless volunteer hours, their continued support, and loyal dedication to the Children’s Hospital of The King’s Daughters.

As we move forward and the Hospital continues to expand in the community, The King’s Daughters’ presence is going to be vital to our future success. We need to remind ourselves as King’s Daughters that we do make a difference in the lives of the children of our community.

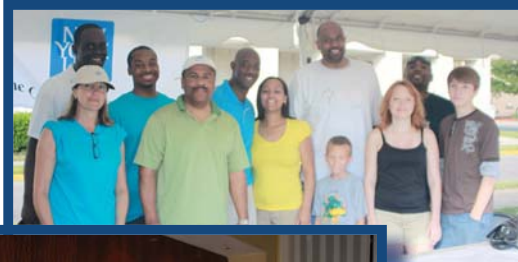
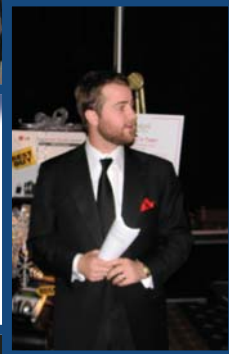
Katie Van Buren  
The King’s Daughters President 2007-09





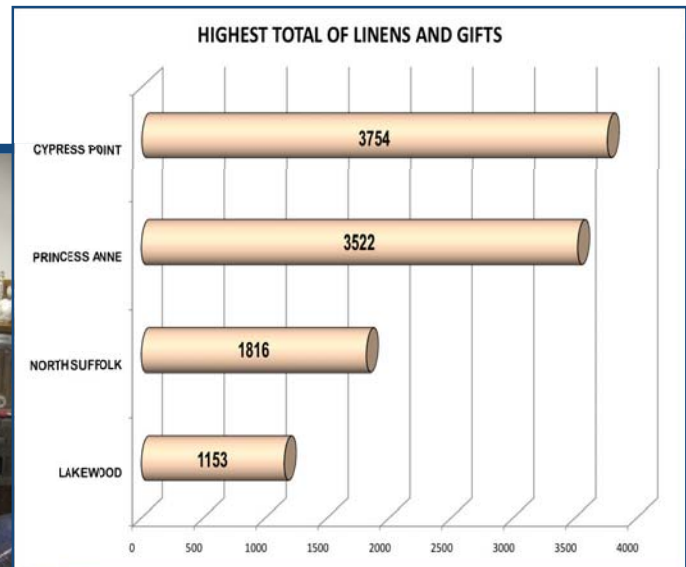
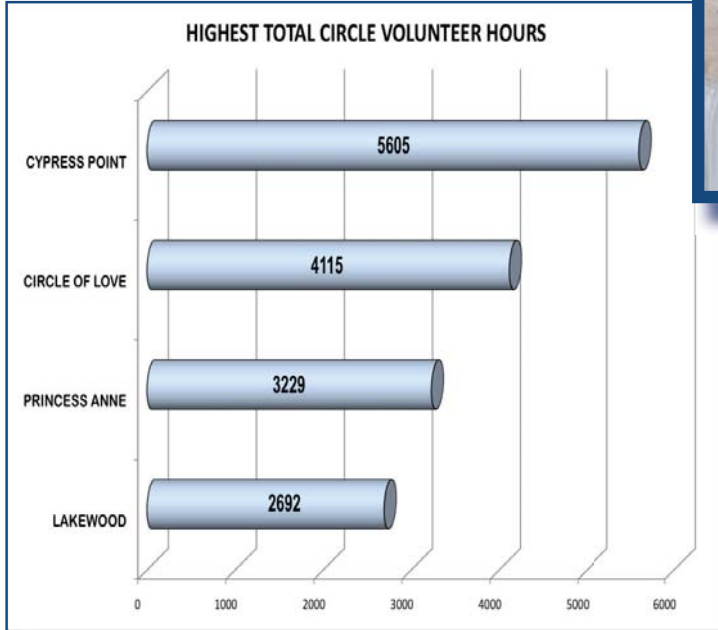
# Our Sponsors help us make a difference

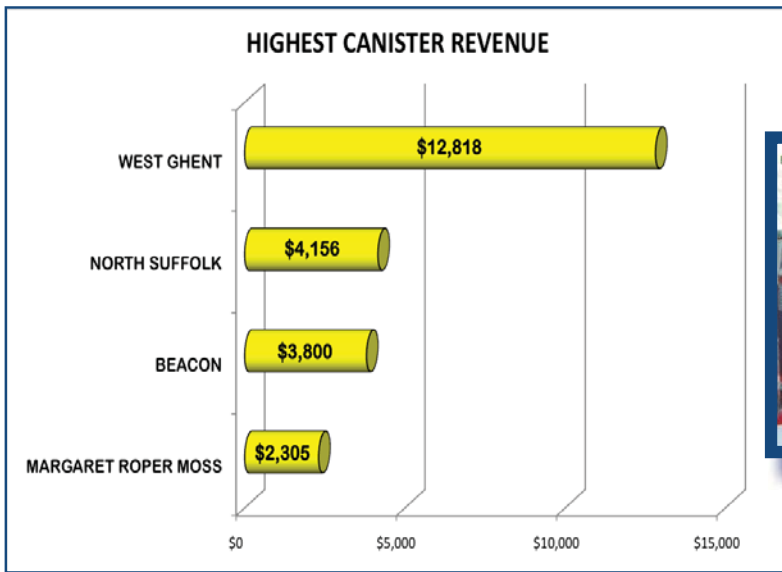
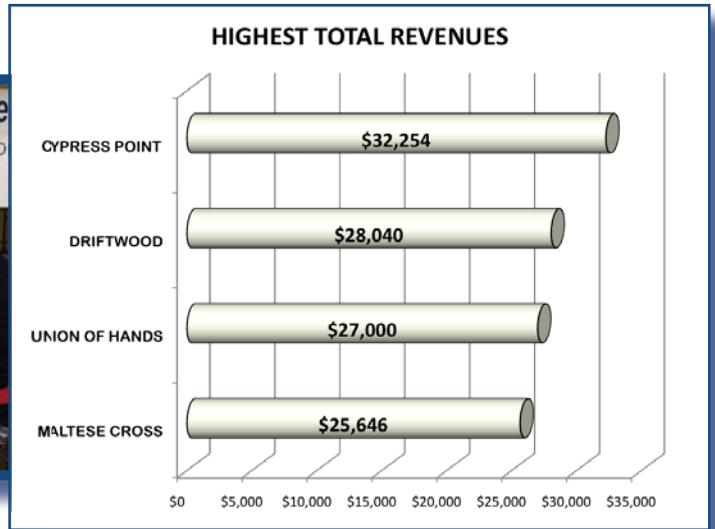
Albano Cleaners  
 Armada Hoffer  
 Bank of America  
 Bardo  
 Mrs. Theresa Bassing Davis  
 Best Buy  
 Beverly's Fine Fashions  
 Ms. June Browne  
 Capital Group Companies  
 Dr. and Mrs. James H. Carraway  
 Centura College  
 Charles Schwab  
 Children's Specialty Group, Neonatal Medicine  
 Mr. and Mrs. Todd Copeland  
 Covington Contracting, Inc.  
 Crackers  
 Mr. & Mrs. James Dahling  
 Mr. & Mrs. William Dashiell  
 Department of Pediatrics, EVMS and CHKD  
 Mr. Bill Dewey  
 Dillard's MacArthur Center  
 Dolphin Fixtures  
 Dominion Enterprises  
 EAT  
 EVMS Maternal Fetal Medicine  
 Howard & Sandy Filer  
 Fleet Printing  
 Farm Fresh Charitable Foundation  
 Food Lion  
 Mr. & Mrs. Paul Fraim  
 Mr. & Mrs. Taylor Franklin  
 Mr. & Mrs. Wendell Franklin  
 Franklin Asset Management  
 General Foam Plastics  
 The Green Onion  
 Mr. & Mrs. Bill Harrington  
 Mr. & Mrs. Tom Host  
 Iguana Surf Club  
 International Paper  
 Mr. and Mrs. Tom Johnson  
 Mrs. Diane Johnston  
 Kaufman & Canoles, P.C.  
 Christopher T. King, DDS, P.C.  
 Dr. & Mrs. Tom Klevan  
 La Bella in Ghent  
 Lake Taylor Transitional Care Hospital  
 David & Lisa Lauderback  
 Mr. & Mrs. Tyler Leinbach  
 Dr. & Mrs. Donald Lipskis  
 Lockheed Martin  
 Lowe's #1546



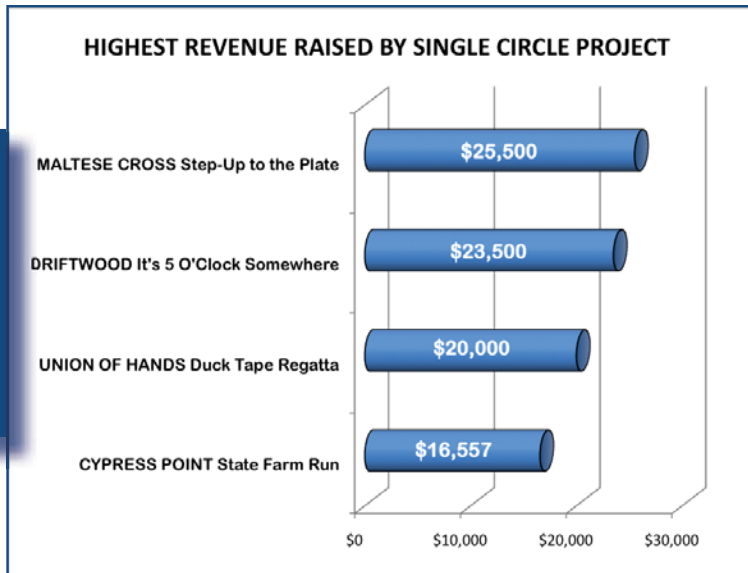
MacArthur Center  
 Macy's Central  
 Dr. & Mrs. Otto Martinson  
 McDonald Garden Center  
 MDC Environmental  
 Medical Center Radiologists, Inc.  
 Membership Marketing Services  
 New Balance  
 New York Life  
 Norfolk Sash & Door  
 Northrop Grumman Shipbuilding  
 Mr. & Mrs. Charles Nusbaum  
 Mr. Darrell Orsak  
 Papco, Inc.  
 Patriot Circle  
 Paul Finch & Associates, P.C.  
 Mrs. Roxanne Pegram  
 Pepsi Bottling Co.  
 Portsmouth Museum Foundation  
 Pro-Rep  
 Professional Printing Center  
 QVC, Chesapeake  
 QVC, Suffolk  
 Ridgway's  
 Rover Cruises  
 Running, Etc.  
 Schuelke Bio Medical / Laser  
 Services  
 Seashore Bikes & Fitness  
 Sentara Healthcare  
 Seventh Point Advertising  
 Paul & Brenda Sharp  
 Sir Chocolate  
 State Farm Foundation  
 SunTrust  
 Terra Firma, LLC  
 The King's Daughters Board of  
 Directors  
 The New York Times Shared Services Center  
 TowneBank  
 Trindco  
 Jim and Kellie Tucker  
 Drs. Robert & Karen Tupper  
 Tysinger Mercedes-Benz  
 Mr. & Mrs. William Van Buren  
 Virginia Beach Urological Associates  
 Virginia Pilot Association  
 Virtexco  
 Warden Family Foundation  
 WHRO  
 Wilbanks, Smith and Thomas Asset Management, LLC  
 Willcox and Savage, P.C.  
 Willette Designs  
 The Winehouse  
 Winter Wonderland Coleman Collection

# 2008-09 Circle Awards





*Circle Awards*





## *Individual Volunteer Hours - Making a Difference*

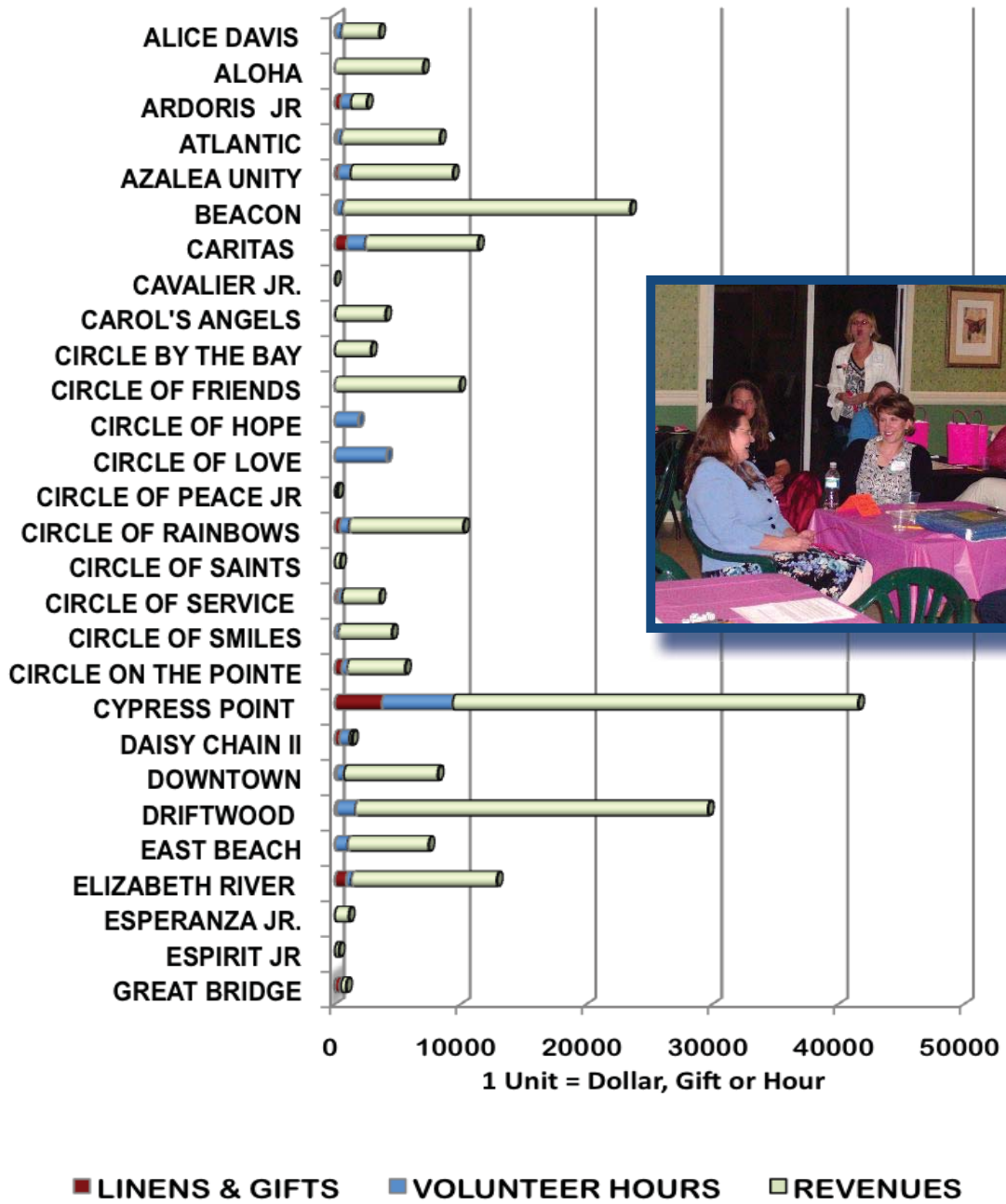
100	Marcella Ryan Driftwood	200	Jamie Mclemore Ardoris Jr
100	Stacie Frischkorn Magnolia	200	Ann Manuel In As Much
100	Lauren Lehew Magnolia	200	Shelly Prado North Suffolk
100	Mandy Berkowitz Larkspur Meadows	200	Barbara Lumpkin Princess Anne
100	Lea Bearden In As Much	300	Robyn Maus Circle On The Pointe
100	Tracey Copeland Horizon	300	Ruth Fae Hume Holly
100	Susan Lambert Horizon	300	Julia Childress Beck Downtown
100	Sandy S. Bond Holly	300	Leslie Spruance Beacon
100	Patricia Hubbard Great Bridge	300	Judy S. Carraway Circle Of Love
100	Joan Eberwine Elizabeth River	300	Joyce Weddle Union of Hands
100	Debbie Hesiak Elizabeth River	300	Diane Payne Atlantic
100	Shirley A. Pritchard Princess Anne	300	Amy Boyd Driftwood
100	Sally Ingram Driftwood	300	Suzanne O'neil Circle Of Rainbows
100	Judi Levin Elizabeth River	300	Sandra Hurt Princess Anne
100	Krista J. Palm Cypress Point	300	Violet M. Tunnell Margaret Roper Moss
100	Paula Collins Caritas	300	Marilyn W. Livingstone Margaret Roper Moss
100	Doreen Hoff Caritas	300	Karen Thompson North Suffolk
100	Temple Joyner Beacon	300	Joan Swan Circle Of Service
100	Mary Ann Reynolds Beacon	300	Amy Metzger Magnolia
100	Holly Marx Beacon	300	Susan M. Gorog Driftwood
100	Margie Griffith Azalea Unity	300	Anne Sherman Caritas
100	Janice Clark Azalea Unity	300	Tess Bradlee Driftwood
100	Demi Wheeler Azalea Unity	300	Betty H. Shannon Ruth Sargeant
100	Carter Garris Ardoris Jr	400	Patricia Gough Wilson Circle Of Rainbows
100	Carolyn W. Motley Elizabeth River	400	Donna Cowdrey East Beach
100	Katherine H. English Union Of Hands	400	Peggy Young Alice Davis
100	Dawn L. Bailey Union Of Hands	400	Kathy Protogyrou Circle On The Pointe
100	Amy Lynch Union Of Hands	400	Patti Crowley Ingram Circle On The Pointe
100	Ruth Rainey Union Of Hands	400	Kimberley Geiger Elizabeth River
100	Betsy Phillips Ruth Sargeant	400	Claire S. Isley Downtown
100	Harriette Frost West Ghent	400	Inger Byrnak Cypress Point
100	Tessa Nuss Ruth Sargeant	400	Amelia N. Key Cypress Point
100	Mary Beth Rickman Union Of Hands	400	Roxanne Pegram Union of Hands
100	Sarah Smythe Union Of Hands	400	Stacey Vellines Downtown
200	Beverly B. West Margaret Roper Moss	400	Maryellen Baldwin Patriot
200	Susan Urschel Lakewood	400	Betsy Cooper Circle On The Pointe
200	Mary Louise Barhydt Lakewood	400	Martha Newell Atlantic
200	Marilyn Warner Lakewood	400	Kathryn Copeland Hood Lakewood
200	Barbara A. Engler Sharing	500	Glenda Lovelace Princess Anne
200	Jo Hayden Horizon	500	Marybeth Dixon Union Of Hands
200	Sue Stublen Elizabeth River	500	Jenny Lehew Magnolia
200	Martha Windley Elizabeth River	500	Elizabeth M. Hope Union of Hands
200	Lisa Lauderback Circle Of Love	500	Margaret "Marge" Fink Cypress Point
200	Fran Herndon Circle Of Rainbows	500	Mary K. Andrews Elizabeth River
200	Debbie Harris East Beach	500	Betty G. Morris Princess Anne
200	Martha Smith Circle On The Pointe	500	Martha M. "Marty" Raiss Downtown
200	Patricia S. Hodge Ruth Sargeant	500	Christine Anderson Driftwood
200	Missy F. Clark Azalea Unity	600	Sandy Gough Caritas

- |      |  |       |   |
|------|--|-------|---|
| 600  | Janice Bailey Caritas                        | 2200  | Temple Richardson Azalea Unity              |
| 600  | Carol Arbuckle Caritas                       | 2200  | Pam Q. Combs West Ghent                     |
| 600  | Tracy L. Hardee Elizabeth River              | 2300  | Paige Heise North Suffolk                   |
| 600  | Kathy H. Heaton Maltese Cross                | 2400  | Marjorie C. Mitchell Princess Anne          |
| 600  | Lil Whitney Driftwood                        | 2500  | Joanne Lundquist Caritas                    |
| 600  | Linda Ermen Patriot                          | 2500  | Lisa Walker Cypress Point                   |
| 700  | Emily Ann Franklin Circle Of Love            | 2500  | Dot Craddock Princess Anne                  |
| 700  | Kari Mewbourne Driftwood                     | 2500  | Nancy H. Nusbaum Horizon                    |
| 700  | Bobbie E. Comess Princess Anne               | 2800  | Nancy B. Strange Thalia Friendship          |
| 700  | Beverly Cockrell Great Bridge                | 2800  | Diane Parsons Whicker North Suffolk         |
| 700  | Amy Harrington Circle Of Love                | 2900  | Joan P. Mayo North Suffolk                  |
| 700  | Isabel P. Anderson Horizon                   | 2900  | Gay W. Shulman Circle Of Service            |
| 700  | Kay Keatley Horizon                          | 2900  | Fran White Thalia Friendship                |
| 700  | Kitty Outlaw North Suffolk                   | 3000  | Esther Z. Hall North Suffolk                |
| 700  | Lillian W. Wells Princess Anne               | 3300  | Evelyn K. Matthews Lakewood                 |
| 700  | Carol Craig Caritas                          | 3500  | Faith R. Sullivan Cypress Point             |
| 800  | Elizabeth C. Oliver Maltese Cross            | 3600  | Sandy M. Burgess West Ghent                 |
| 800  | Cornelia D. Mckee Ruth Sargeant              | 3700  | Katie Van Buren Maltese Cross               |
| 800  | Corinne Mastronardi-Gillespie Circle Of Love | 4000  | Barbara D. Henry Ruth Sargeant              |
| 800  | Clara W. Strehlow Caritas                    | 4300  | Tammy Olenski Cypress Point                 |
| 800  | Cecilia P. Stanfield Azalea Unity            | 4300  | Edna St. John Thalia Friendship             |
| 900  | Barbara H. Gresham Princess Anne             | 4300  | Barbara C. Lipskis Maltese Cross            |
| 900  | Judi Worley Maltese Cross                    | 4600  | Dr. Linda Maclaughlin Cypress Point         |
| 900  | Constance Debbink Caritas                    | 4800  | Rose Goheen Cypress Point                   |
| 1000 | Joan Griffey West Ghent                      | 5600  | Anna Margaret Rhodes Princess Anne          |
| 1000 | Dee N. Newman Great Bridge                   | 6700  | Marguerite B. Windley In As Much            |
| 1000 | Kathy Courage Driftwood                      | 7000  | Mildred H. "Butch" Burgess<br>Cypress Point |
| 1000 | Brenda "Ikie" Gilmer Driftwood               | 7300  | Elly Smith Azalea Unity                     |
| 1100 | Sherri G. Pritchard Circle Of Hope           | 7800  | Cecilia C. Gerloff Thalia Friendship        |
| 1100 | Janice C. Carlson Caritas                    | 9000  | Evelyn H. Williard Thalia Friendship        |
| 1100 | Karen W. Bailey Circle Of Hope               | 9200  | Evon R. Rice Cypress Point                  |
| 1100 | Kathryn P. Callahan Circle Of Rainbows       | 9600  | Sherry Lieberman Cypress Point              |
| 1200 | Mary G. Keogh Holly                          | 9600  | Heike F. Walker Alice Davis                 |
| 1200 | Romayne A. Krall North Suffolk               | 17800 | Janet R. Carter West Ghent                  |
| 1200 | Christina Waters Circle Of Love              | 29300 | Joann Klotz Lakewood                        |
| 1200 | Anne Roesch Alice Davis                      |       |   |
| 1300 | Sarah M. Bishop Maltese Cross                |       |   |
| 1300 | Dewanna S. Jackolski Driftwood               |       |   |
| 1300 | Patricia Morgan Cypress Point                |       |   |
| 1400 | Ann W. Williams Lakewood                     |       |   |
| 1400 | Ruth Cole Princess Anne                      |       |   |
| 1500 | Yvonne W. Floyd Lakewood                     |       |   |
| 1600 | Pam Taylor Cypress Point                     |       |   |
| 1700 | Sheree B. Busch Cypress Point                |       |   |
| 1700 | Pauline Ashe Thalia Friendship               |       |   |
| 1900 | Bev Hunter Driftwood                         |       |   |
| 1900 | Martha M. Franklin Circle Of Love            |       |   |
| 2000 | Barbara Stein Princess Anne                  |       |   |
| 2100 | Barbara D. McDonald Cypress Point            |       |   |
| 2100 | Betsy Cahoon Lakewood                        |       |   |
| 2200 | Brigita Martinson Atlantic                   |       |   |

*Volunteer  
Hours Awards*

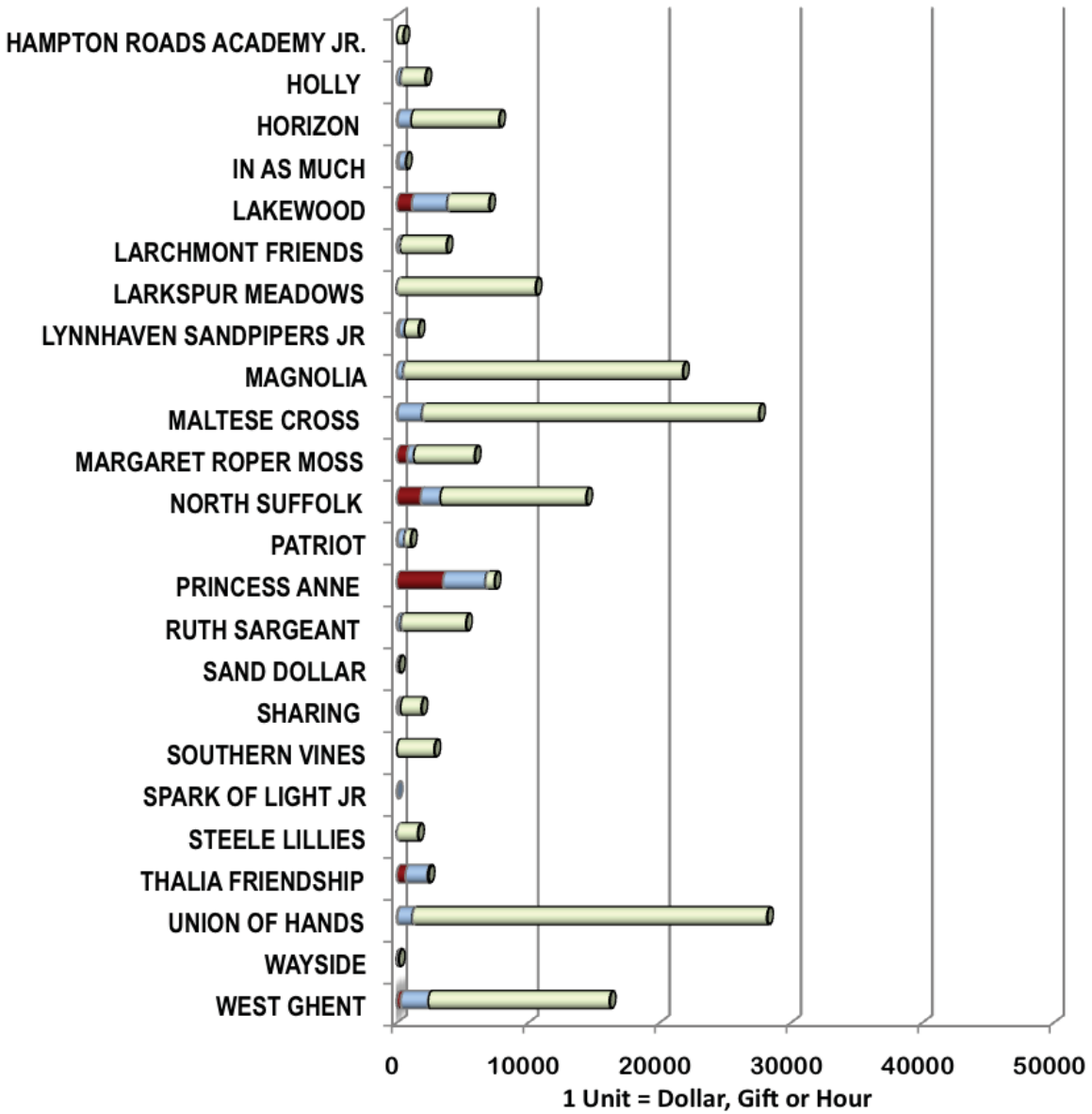


# CIRCLE TOTALS



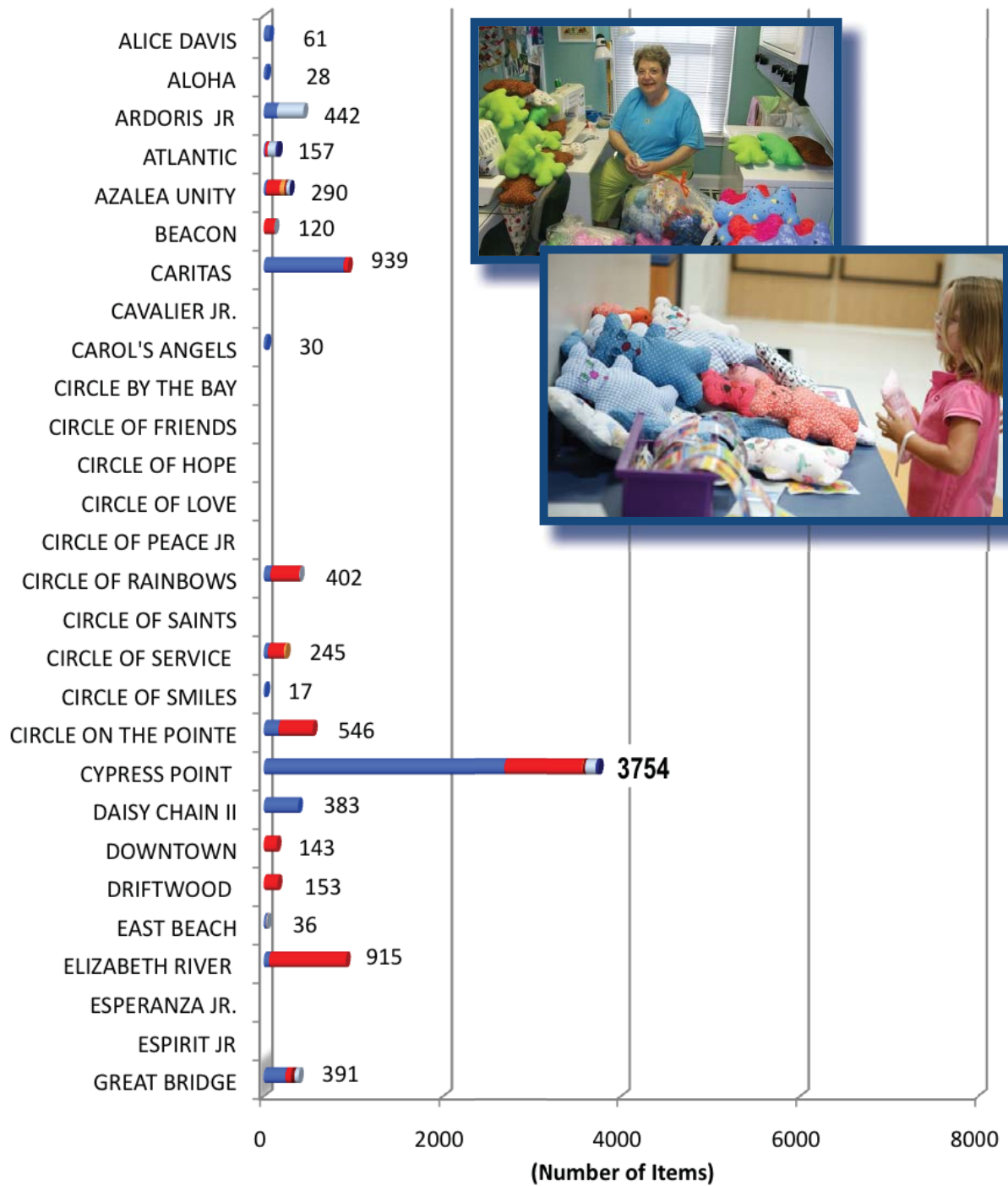


# CIRCLE TOTALS



*Circle Totals*

# CIRCLE LINENS AND GIFTS



■ BATTERIES

■ BEARS

■ BOOKS/MAGAZINES

■ CAPS AND BOOTIES

■ CRAYONS AND MARKERS

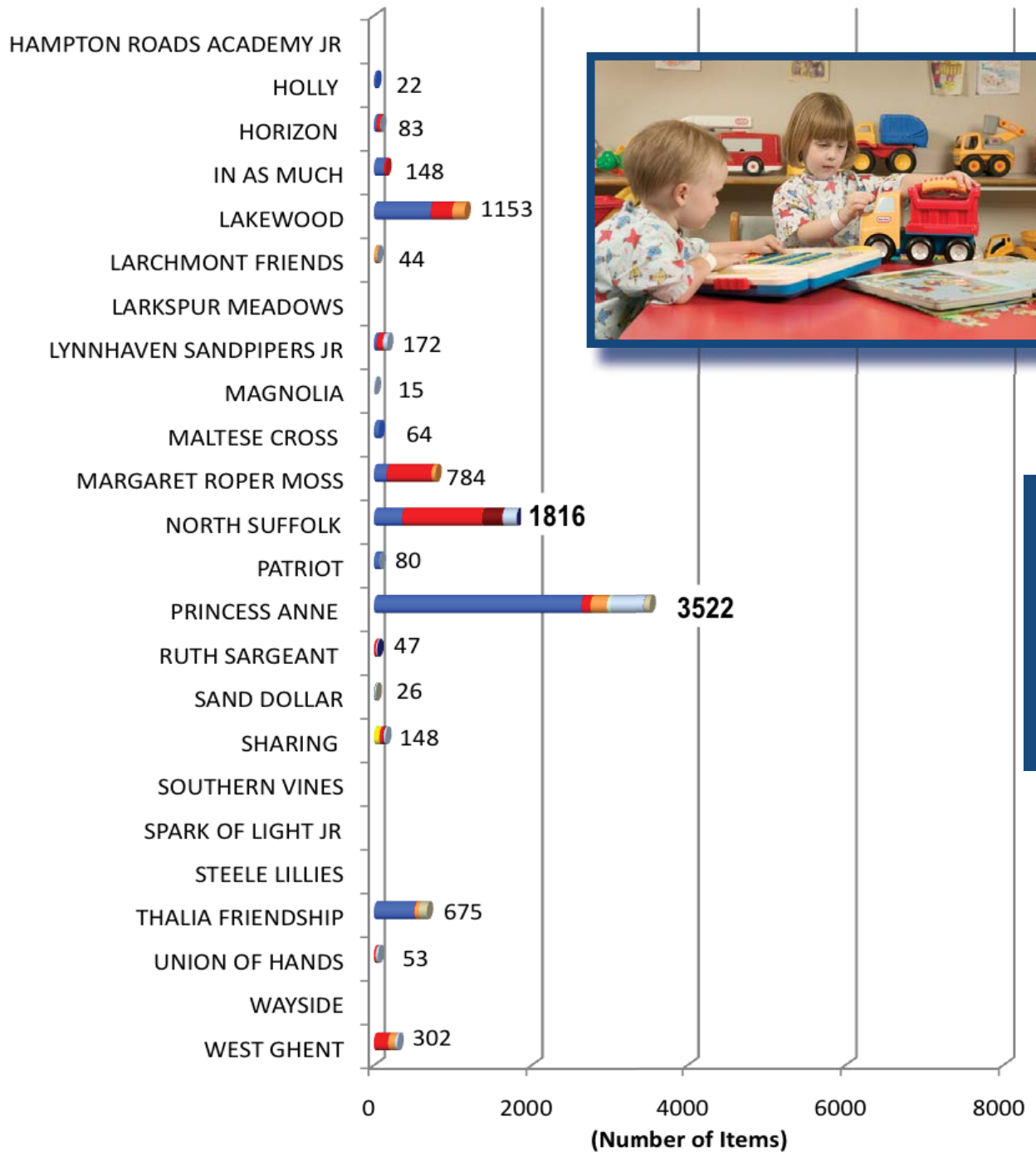
■ LOOK-A-LIKE DOLLS

■ MISCELLANEOUS

■ PLAYING CARDS

■ TOOTH FAIRY PILLOWS

# CIRCLE LINENS AND GIFTS

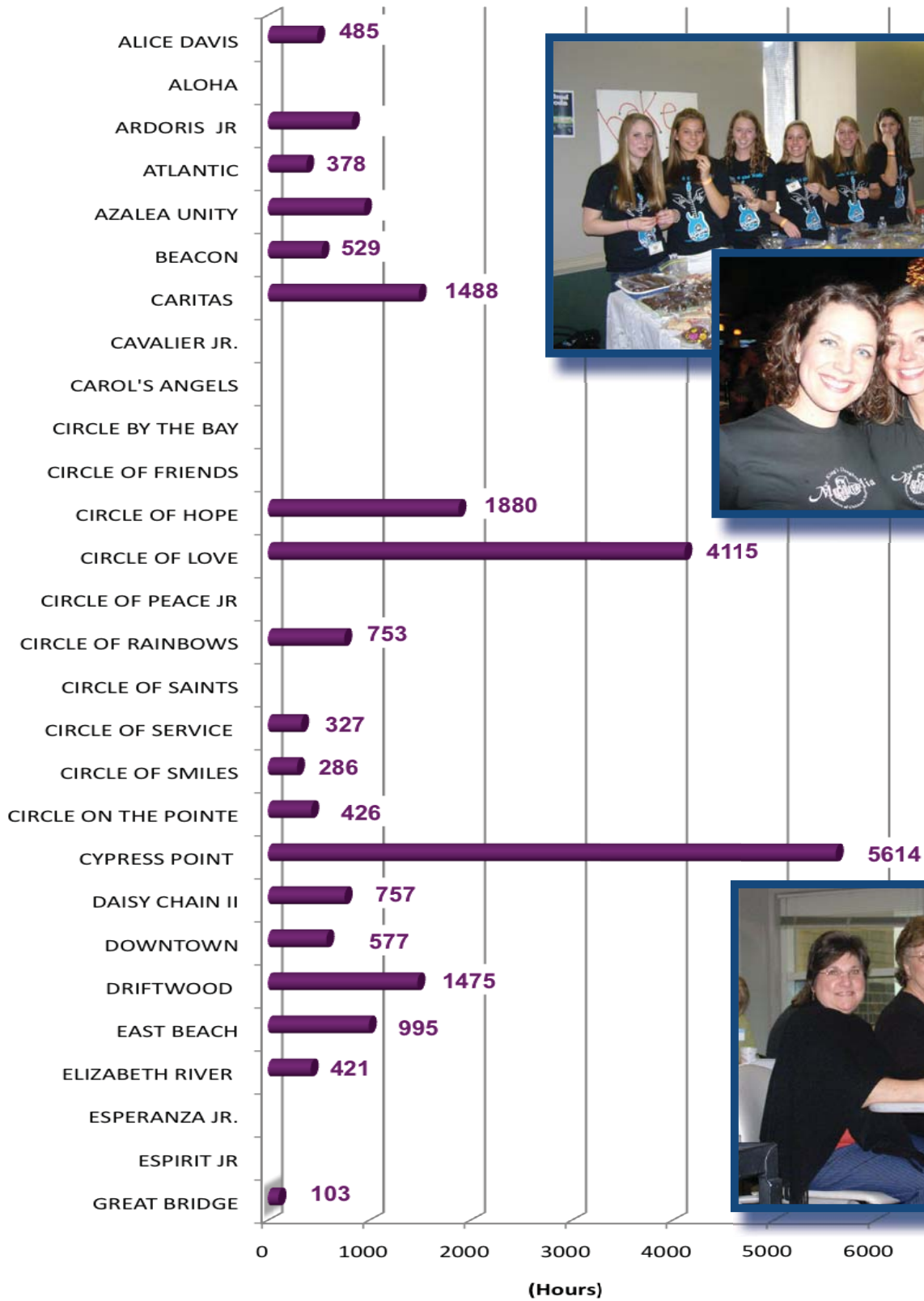


Circle Linens

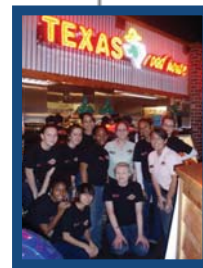
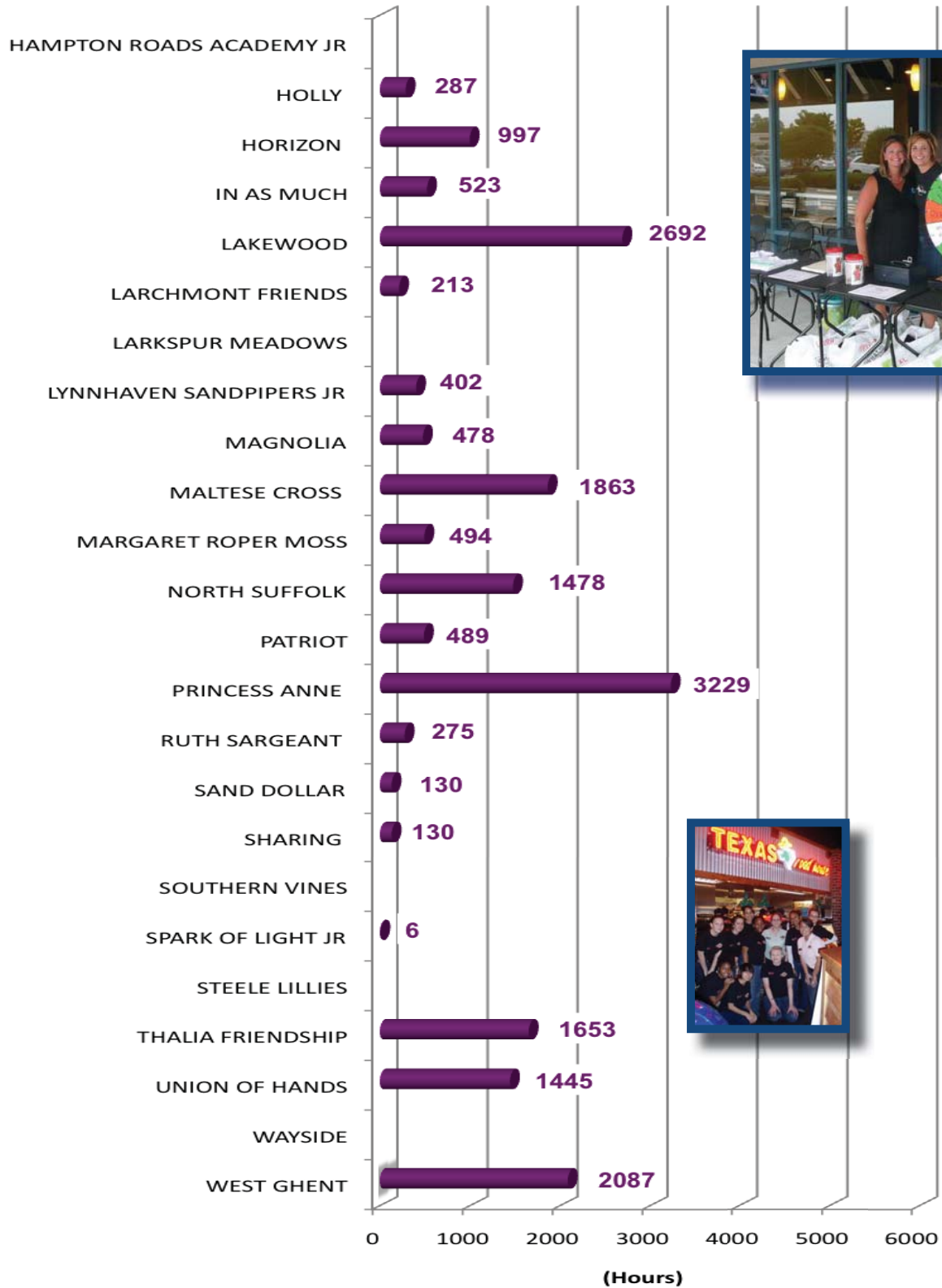
- BATTERIES
- BEARS
- BOOKS/MAGAZINES
- CAPS AND BOOTIES
- CRAYONS AND MARKERS
- LOOK-A-LIKE DOLLS
- MISCELLANEOUS
- PLAYING CARDS
- TOOTH FAIRY PILLOWS



# CIRCLE VOLUNTEER HOURS

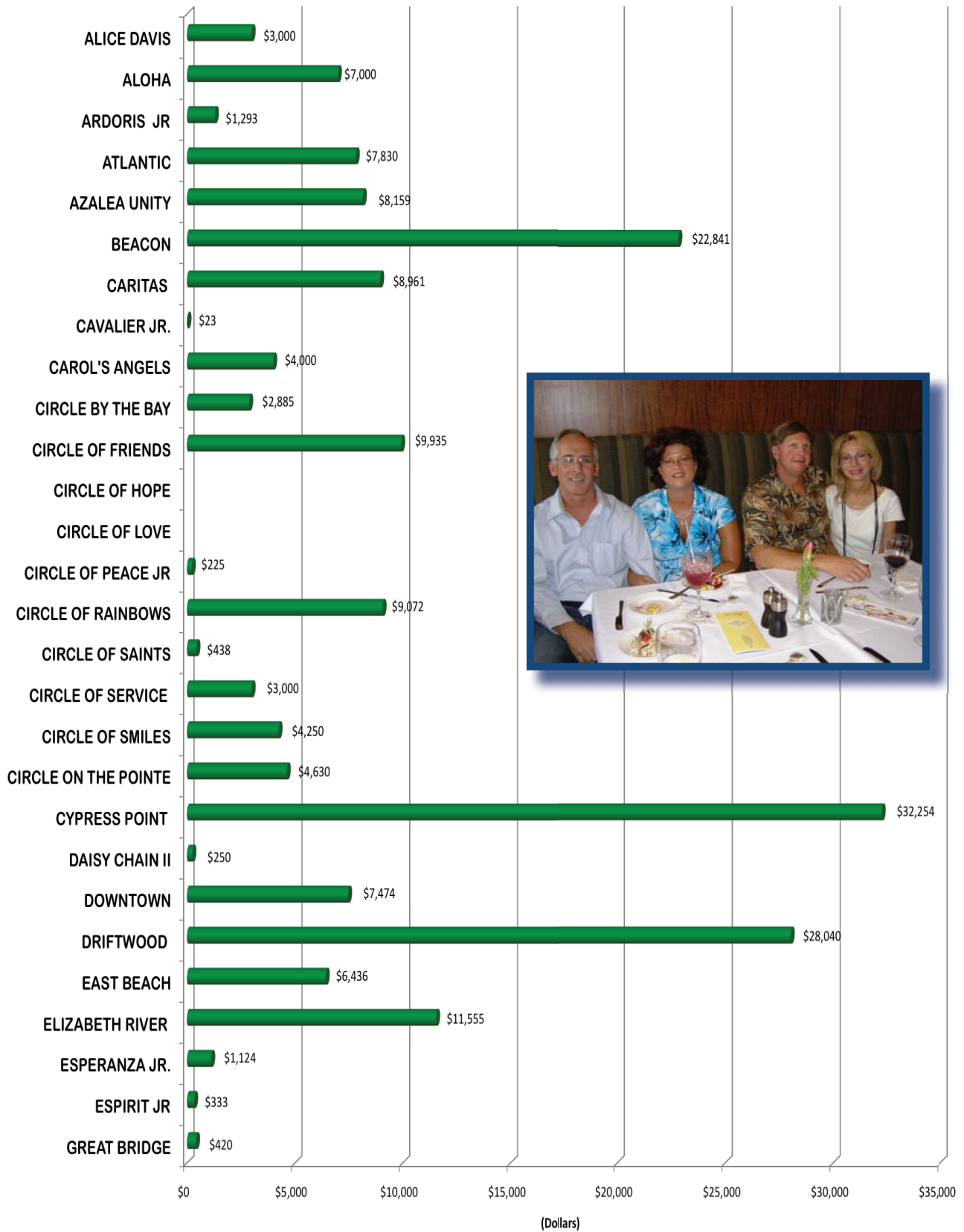


# CIRCLE VOLUNTEER HOURS



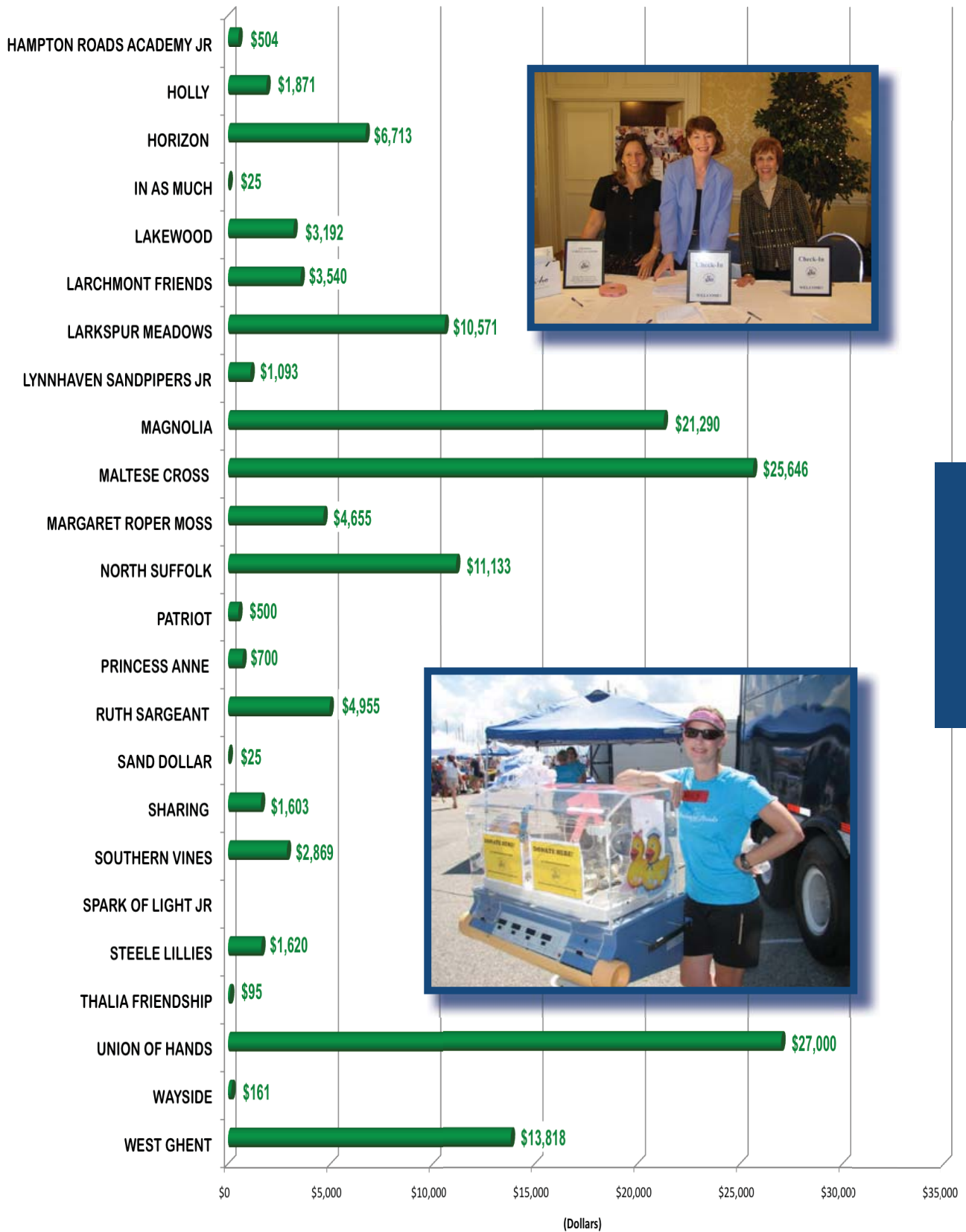
*Circle Hours*

## CIRCLE REVENUES





## CIRCLE REVENUES

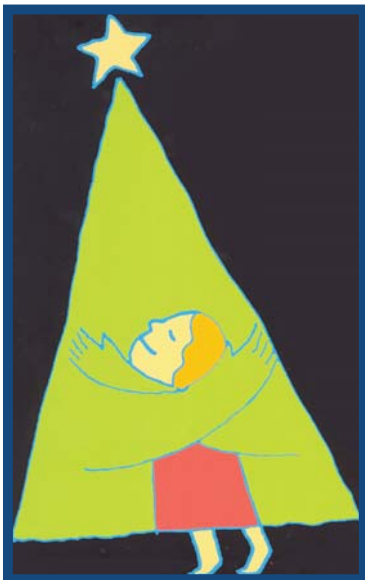


Circle Revenues

# Circle Contributions to the 2008 Holly Festival of Trees

Aloha Circle	2ft Tree	\$50.00
Atlantic Circle	2ft Tree	\$50.00
Azalea Unity Circle	2ft Tree	\$50.00
Carol's Angels Circle	2ft Tree	\$50.00
	Surf's Up!	\$225.00
	Carol's Angels Circle Total	\$275.00
Circle of Friends	2ft Tree	\$50.00
Circle of Love	2ft Tree	\$50.00
Circle of Rainbows	2ft Tree	\$50.00
Circle of Smiles	2ft Tree	\$50.00
Circle on the Pointe	2ft Tree	\$50.00
Downtown Circle	Santa's All-Star Sports Tree	\$1,000.00
	Santa's Little Green Tinsel Tree	\$180.00
	Downtown Circle Total	\$1,180.00
Driftwood Circle	Down by the Old Mill Stream - Gingerbread	\$125.00
East Beach Circle	2ft Tree	\$50.00
Holly Circle	2ft Tree	\$50.00
Horizon Circle	2ft Tree	\$50.00
Lakewood Circle	2ft Tree	\$50.00
Larchmont Friends Circle	A Mermaid Party	\$1,500.00
Margaret Roper Moss Circle	"Holiday Spirits"	\$1,600.00
Patriot Circle	2ft Tree	\$50.00
	Bratz	\$155.00
	Cheetah Girls	\$160.00
	Disney Princess	\$370.00
	Hello Kitty	\$275.00
	High School Musical	\$420.00
	Pirates of the Caribbean	\$525.00
	Sex in the City	\$190.00
	Tinkerbell	\$225.00
	Coachy Christmas	\$1,200.00
	Best Buy in Town	\$6,000.00
	Wreath	\$60.00
	Wreath	\$60.00
	Wreath	\$60.00
	Ratatouille	\$200.00
	Dora the Explorer	\$145.00
	101 Dalmations	\$95.00
	Patriot Circle Total	\$10,190.00
Southern Vines Circle	The Great Outdoors	\$900.00
Steele Lillies Circle	Under the Kitchen Christmas Tree	\$305.00

**Grand Total \$16,675.00**



# Circle Totals

	<i>Linens &amp; Gifts</i>		<i>Project Revenues</i>		<i>Volunteer Hours</i>	
Alice Davis			Donation	\$1,000		
	Bears	61	Donation - Beth & Tom Duke Fund	\$2,000		
	Total Linens & Gifts	61	Alice Davis Total	\$3,000	Hours	485
Aloha			Island Party	\$6,000		
	Bears	28	Island Party - Endowment Donation	\$1,000		
	Total Linens & Gifts	28	Aloha Total	\$7,000		
Ardoris Jr.	Bears	148	California Pizza Kitchen	\$325		
	Miscellaneous	294	Norfolk Collegiate Club Fundraiser	\$968		
	Total Linens & Gifts	442	Ardoris Jr. Total	\$1,293	Hours	829
Atlantic	Bears	12				
	Books & Magazines	30				
	Miscellaneous	90				
	Playing Cards	25				
	Total Linens & Gifts	157			Hours	378
Atlantic Circle			Kangaroo Jacks	\$1,000		
			Silpada Jewelry Sale	\$274		
			Silpada - Endowment	\$274		
			Texas Roadhouse Grand Opening	\$6,283		
			Atlantic Circle Total	\$7,830		
Azalea Unity	Bears	25	Canisters	\$159		
	Books & Magazines	152	Fool's Feast	\$3,500		
	Caps & Booties	54	Fool's Feast	\$500		
	Crayons & Markers	19	Kids Shop	\$3,500		
	Miscellaneous	39	Kids Shop - Endowment	\$500		
	Playing Cards	1	Azalea Unity Total	\$8,159	Hours	948
	Total Linens & Gifts	290				
Beacon			Brewfest	\$3,796		
			Broad Bay Event	\$104		
			Canisters	\$3,800		
			Endowment Donation	\$500		
			It's in the Bag - Purse Sale	\$1,656		
			It's in the Bag - Purse Sale	\$1,482		
			Jewelry Sale	\$2,126		
			Jewelry Sale	\$1,437		
	Books & Magazines	118	Norfolk Florist Flower Card	\$940		
	Miscellaneous	2	WM Jordan Golf Tournament	\$7,000		
	Total Linens & Gifts	120	Beacon Total	\$22,841	Hours	529

Circle Accomplishments

<i>Linens &amp; Gifts</i>		<i>Project Revenues</i>		<i>Volunteer Hours</i>	
		Bus Trip-Tour & Tea for the Kids	\$1,700		
		Canisters	\$341		
		Christmas Silent Auction	\$140		
		Donation in Honor of CHKD Thrift Stores	\$25		
		In Honor of Marie Smith	\$75		
		In Memory of William Waters, II	\$400		
		Norfolk Florist Flower Card	\$1,000		
Bears	889	Scarecrow	\$3,280		
Books & Magazines	50	Scarecrow - Endowment	\$2,000		
Total Linens & Gifts	939	Caritas Total	\$8,961	Hours	1488
		Casino Night	\$3,000		
Carol's Angels		Casino Night - Endowment	\$1,000		
Bears	30	Carol's Angels Total	\$4,000		
Total Linens & Gifts	30				
		Donation	\$23		
Cavalier Jr.		Cavalier Jr Total	\$23		
		Party with a Purpose	\$605		
		Spring Picnic with a Purpose	\$1,100		
		Yard Sale	\$1,180		
Circle by the Bay		Circle by the Bay Total	\$2,885		
		Canisters	\$135		
		Concessions-Hampton Coliseum	\$5,500		
		Holiday Cards	\$2,000		
		In Memory of Chris Tereszczuk	\$80		
		Scarecrow	\$2,120		
		Thrift Store Bag Drive - Honorable Mention	\$100		
Circle of Friends		Circle of Friends Total	\$9,935		
				Hours	1880
Circle Of Hope				Hours	4115
Circle Of Love				Hours	4115
		Final Donation	\$225		
Circle of Peace Jr.		Circle of Peace Jr. Total	\$225		
		Bunco	\$5,500		
		Canisters	\$72		
Bears	75	Endowment Donation	\$3,000		
Books & Magazines	322	Endowment Donation	\$500		
Miscellaneous	5	Circle of Rainbows Total	\$9,072	Hours	753
Total Linens & Gifts	402				



*Linens & Gifts*

*Project Revenues*

*Volunteer Hours*

Circle Of Service

Bears	47				
Books & Magazines	176				
Caps & Booties	22	Endowment Donation	\$3,000		
Total Linens & Gifts	245	Circle of Service Total	\$3,000	Hours	327

Circle of Smiles

		Donation - Beth & Tom Duke Fund	\$250		
		Market Faire	\$2,500		
		Market Faire - Endowment	\$500		
Bears	17	Poinsetta Sale	\$1,000		
Total Linens & Gifts	17	Circle of Smiles Total	\$4,250	Hours	286

Circle on the Pointe

		Ladies Night Out	\$1,130		
Bears	166	Rover Cruise - Endowment	\$2,300		
Books & Magazines	380	Rover Cruise - General	\$1,200		
Total Linens & Gifts	546	Circle on the Pointe Total	\$4,630	Hours	426

Cypress Point

Bears	2694				
Books & Magazines	874	Canisters	\$1,499		
Caps & Booties	6	Endowment Donation	\$632		
Crayons & Markers	28	Holiday Bazaar	\$13,266		
Miscellaneous	118	State Farm Run	\$16,557		
Playing Cards	34	Thrift Store Bag Drive - Second Place	\$300		
Total Linens & Gifts	3754	Cypress Point Total	\$32,254	Hours	5614

Daisy Chain II

Bears	383	Endowment Donation	\$250		
Total Linens & Gifts	383	Daisy Chain II Total	\$250	Hours	757

Downtown

		Canisters	\$160		
		Oyster Roast	\$2,314		
Books & Magazines	143	Oyster Roast – Endowment Donation	\$5,000		
Total Linens & Gifts	143	Downtown Total	\$7,474	Hours	577

Driftwood

		Canisters	\$1,064		
		Donation – Beth & Tom Duke Fund	\$1,000		
		It's 5 O'Clock Somewhere	\$23,500		
		Luncheon & Fashion Show	\$2,276		
Books & Magazines	153	Thrift Store Bag Drive – Third Place	\$200		
Total Linens & Gifts	153	Driftwood Total	\$28,040	Hours	1475

Circle Accomplishments

<i>Linens &amp; Gifts</i>		<i>Project Revenues</i>		<i>Volunteer Hours</i>		
East Beach		Beach Bunko	\$2,400			
		Benefit Concert - Endowment	\$1,775			
		Cabi Clothes Sale	\$359			
		Canisters	\$337			
		German Army B& Concert-Endowment	\$150			
	Bears	26	Gold Redemption - Endowment	\$200		
	Caps & Booties	6	Green for the Kids	\$1,020		
	Miscellaneous	4	In Memory of Deborah Hertz	\$195		
	Total Linens & Gifts	36	East Beach Total	\$6,436	Hours	995
Elizabeth River		Bizarre Bazaar Bus Trip 2007	\$672			
		Bizarre Bazaar Bus Trip 2008	\$1,500			
		Canisters	\$29			
		Donation	\$1,016			
		Endowment Donation	\$500			
		Endowment Donation	\$500			
		Golf Tournament	\$4,010			
		Lemons Under the Tree	\$136			
		Peanut Sales	\$1,686			
	Bears	59	Peanut Sales	\$1,000		
	Books & Magazines	856	Shop for a Cause at Macy's	\$506		
	Total Linens & Gifts	915	Elizabeth River Total	\$11,555	Hours	421
Esperanza Jr.		Canisters	\$106			
		Dance	\$944			
		Donation	\$74			
		Esperanza Jr. Total	\$1,124			
Espirit Jr.		Donation	\$333			
		Espirit Jr. Total	\$333			
Great Bridge	Bears	241				
	Books & Magazines	62				
	Crayons & Markers	40				
	Miscellaneous	48	Canisters	\$420		
	Total Linens & Gifts	391	Great Bridge Total	\$420	Hours	103
Hampton Roads Academy Jr.		Sidewalk Chalk Event	\$504			
		Hampton Roads Academy Jr. Total	\$504			
Holly		Donation - Beth & Tom Duke Fund	\$250			
		Garage Sale	\$1,200			
		Vending - Endowment	\$243			
	Bears	22	Vending - Endowment	\$178		
	Total Linens & Gifts	22	Holly Total	\$1,871	Hours	287

*Linens & Gifts*

*Project Revenues*

*Volunteer Hours*

		Canisters	\$263		
Horizon	Bears	34	Donation	\$1,200	
	Books & Magazines	47	Donation - Beth & Tom Duke Fund	\$250	
	Miscellaneous	2	Endowment Donation	\$5,000	
	Total Linens & Gifts	83	Horizon Total	\$6,713	Hours 997

In As Much	Bears	127			
	Books & Magazines	21	Donation - Beth & Tom Duke Fund	\$25	
	Total Linens & Gifts	148	In As Much Total	\$25	Hours 523

Lakewood			Canisters	\$462	
	Bears	721	Donation	\$2,000	
	Books & Magazines	273	Jeans Day	\$230	
	Caps & Booties	159	Thrift Store Bag Drive - First Place	\$500	
	Total Linens & Gifts	1153	Lakewood Total	\$3,192	Hours 2692

Larchmont Friends	Caps & Booties	43	Endowment Donation	\$540	
	Miscellaneous	1	Sip & Shop; Spaghetti Dinner; Bunko	\$3,000	
	Total Linens & Gifts	44	Larchmont Friends Total	\$3,540	

Larkspur Meadows			Donation - Beth & Tom Duke Fund	\$500	
			Wine & Dine for the Kids - Endowment	\$5,000	
			Wine & Dine for the Kids - Endowment	\$5,000	
			Larkspur Meadows Total	\$10,500	Hours 213

Lynnhaven Sandpipers Jr.			Canisters	\$258	
	Bears	38	Christmas Fundraiser	\$225	
	Books & Magazines	77	Cold Stone Creamery Cashola	\$155	
	Miscellaneous	57	Garage Sale	\$455	
	Total Linens & Gifts	172	Lynnhaven Sandpipers Jr. Total	\$1,093	Hours 402

Magnolia			Fantasy Shopping Night	\$14,790	
	Miscellaneous	15	March Madness	\$6,500	
	Total Linens & Gifts	15	Magnolia Total	\$21,290	Hours 478

Maltese Cross			Canisters	\$46	
			Lipskis Donation - Beth & Tom Duke Fund	\$100	
	Bears	64	Step-Up to the Plate	\$25,500	
	Total Linens & Gifts	64	Maltese Cross Total	\$25,646	Hours 1863

Margaret Roper Moss			Canisters	\$2305	
			Donation	\$1,000	
	Bears	163	Donation	\$150	
	Books & Magazines	569	Donation - Beth & Tom Duke Fund	\$200	
	Caps & Booties	52	Endowment Donation	\$1,000	
	Total Linens & Gifts	784	Margaret Roper Moss Total	\$4,655	Hours 494

Circle Accomplishments

	<i>Linens &amp; Gifts</i>	<i>Project Revenues</i>	<i>Volunteer Hours</i>	
North Suffolk		Canisters	\$4,156	
	Bears	359	Cartridges for the Kids Recycling	\$1,000
	Books & Magazines	1008	Donation	\$200
	Caps & Booties	4	Driver Alive	\$297
	Crayons & Markers	261	Driver Days	\$1,000
	Miscellaneous	182	Endowment Donation	\$2,000
	Playing Cards	2	Scarecrow	\$2,480
	Total Linens & Gifts	1816	North Suffolk Total	\$11,133
Patriot	Bears	75		
	Miscellaneous	5	Endowment Donation	\$500
	Total Linens & Gifts	80	Patriot Total	\$500
Princess Anne	Bears	2634		
	Books & Magazines	114		
	Caps & Booties	208		
	Crayons & Markers	1		
	Look-A-Like Dolls	42		
	Miscellaneous	445	Donation	\$200
	Playing Cards	3	Donation - Beth & Tom Duke Fund	\$100
	Tooth Fairy Pillows	75	Endowment Donation	\$400
Total Linens & Gifts	3522	Princess Anne Total	\$700	Hours 3229
Ruth Sargeant		Canisters	\$255	
		Donation	\$250	
		Donation - Beth & Tom Duke Fund	\$250	
	Books & Magazines	27	Endowment Donation	\$2,000
	Miscellaneous	19	Endowment Donation	\$1,800
	Playing Cards	1	Endowment Donation	\$400
	Total Linens & Gifts	47	Ruth Sargeant Total	\$4,955
Sand Dollar	Bears	8		
	Look-A-Like Dolls	9		
	Tooth Fairy Pillows	9	Endowment Donation	\$25
	Total Linens & Gifts	26	S& Dollar Total	\$25
Sharing	Batteries	72		
	Books & Magazines	40	Canisters	\$203
	Crayons & Markers	11	Donation	\$400
	Miscellaneous	25	Love Gift	\$1,000
	Total Linens & Gifts	148	Sharing Total	\$1,603
Southern Vines		Cheers for the Kids – The Boot	\$540	
		Cheers for the Kids-Still Grand Opening	\$540	
		Cheers for the Kids-The Taphouse Ghent	\$789	
		Cheers for the Kids-The Taphouse Ghent-Endowment	\$1,000	
		Southern Vines Total	\$2,869	Hours 6



*Linens & Gifts*

*Project Revenues*

*Volunteer Hours*

Spark Of Light Jr

--	--	--	--	--	--

Steele Lillies

		Wine Tasting	\$1,500		
		Wine Tasting – Endowment	\$120		
		Steele Lillies Total	\$1,620		

Thalia Friendship

Bears	511				
Books & Magazines	6				
Caps & Booties	56				
Miscellaneous	3				
Tooth Fairy Pillows	99	Canisters	\$95		
Total Linens & Gifts	675	Thalia Friendship Total	\$95	Hours	1653

Union of Hands

		Birthday Club	\$5,000		
Books & Magazines	22	Birthday Club	\$2,000		
Crayons & Markers	1	Duck Tape Regatta	\$10,000		
Miscellaneous	30	Duck Tape Regatta – Endowment Donation	\$10,000		
Total Linens & Gifts	53	Union of Hands Total	\$27,000	Hours	1445

Wayside

		Endowment Donation	\$161		
		Wayside Total	\$161		

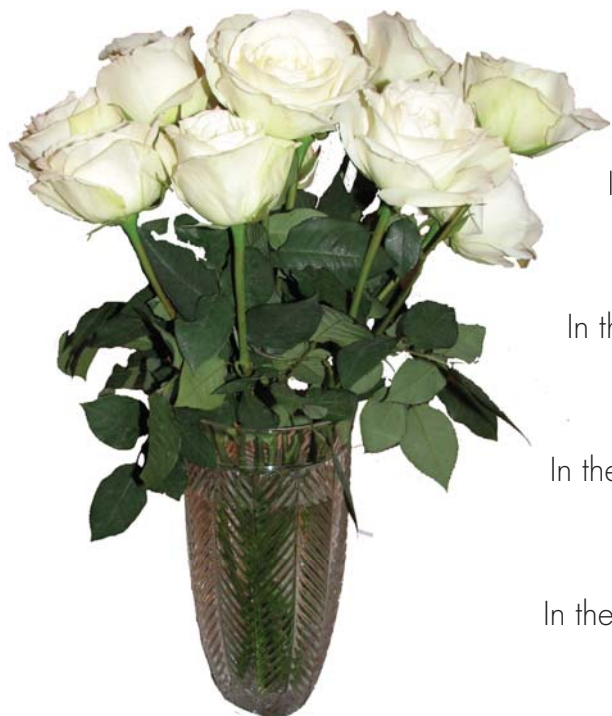
West Ghent

Books & Magazines	181	Canisters	\$12,818		
Caps & Booties	89	Chef's Edge & Bake Sale	\$641		
Miscellaneous	32	Donation	\$359		
Total Linens & Gifts	302	West Ghent Total	\$13,818	Hours	2087

Circle Accomplishments



## *In Memoriam...*



We Remember Them.

In the rising of the sun and in its going down,

We Remember Them.

In the blowing of the wind and in the chill of winter,

We Remember Them.

In the opening of the buds and in the rebirth of spring,

We Remember Them.

In the blueness of the sky and in the warmth of summer,

We Remember Them.

In the rustling of leaves and in the beauty of autumn,

We Remember Them.

In the beginning of the year and when it ends,

We Remember Them.

When we are weary and in need of strength,

We Remember Them.

When we are lost and sick at heart,

We Remember Them.

When we have joys we yearn to share,

We Remember Them.

So long as we live, they too shall live,

For they are now a part of us as,

We Remember Them.

*We remember them...*

**Mary Ann Casey  
Thalia Friendship Circle**

**Connie Dalrymple  
Patriot Circle**

**Linda Gordon  
Caritas Circle**

**Deborah M. Hirtz  
East Beach Circle**

**Ardath Jones  
Wayside Circle**

**Norma Kilmer  
Lakewood Circle**

**Ruby McDaniel  
North Suffolk Circle**

**Karen Pharr  
Beacon Circle**

**Anne Sherman  
Caritas Circle**

**Betty Vick  
Thalia Friendship Circle**

*In Memoriam*

*Since 1896.*



## *The King's Daughters*

601 Children's Lane Norfolk, VA 23507  
757-668-7098 757-668-8907 fax  
[www.kingsdaughters.org](http://www.kingsdaughters.org) [info@kingsdaughters.org](mailto:info@kingsdaughters.org)